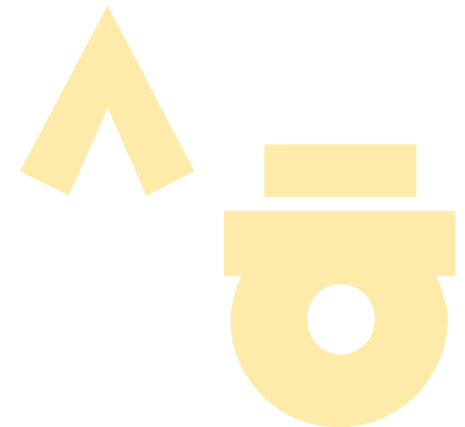


- I **King Sejong Institute Foundation**
- II Operation of King Sejong Institute
- III Education of King Sejong Institute
- IV Educational Content of King Sejong Institute Foundation

The King Sejong Institute Foundation (KSIF) is a public institution that operates under the auspices of the Republic of Korea (ROK) Ministry of Culture, Sports and Tourism, which supervises Korean language education and promotion of Korean culture overseas.

* Pursuant to Article 19-2 (Establishment of King Sejong Institute Foundation) of the Framework Act on Korean Language

As a national institution dedicated to international cultural exchanges, the KSIF connects the world through Korean language and culture, taking the lead in making the world a better place.



4 ABOUT THE KSIF

5 ORGANIZATION

6 KSIF PROJECTS
AT A GLANCE

8 KSIs AROUND THE WORLD

10 STATISTICS

12 PUBLIC RELATIONS

14 CONTRIBUTIONS

A Nationally Recognized Brand for the Dissemination of Korean Language and Culture

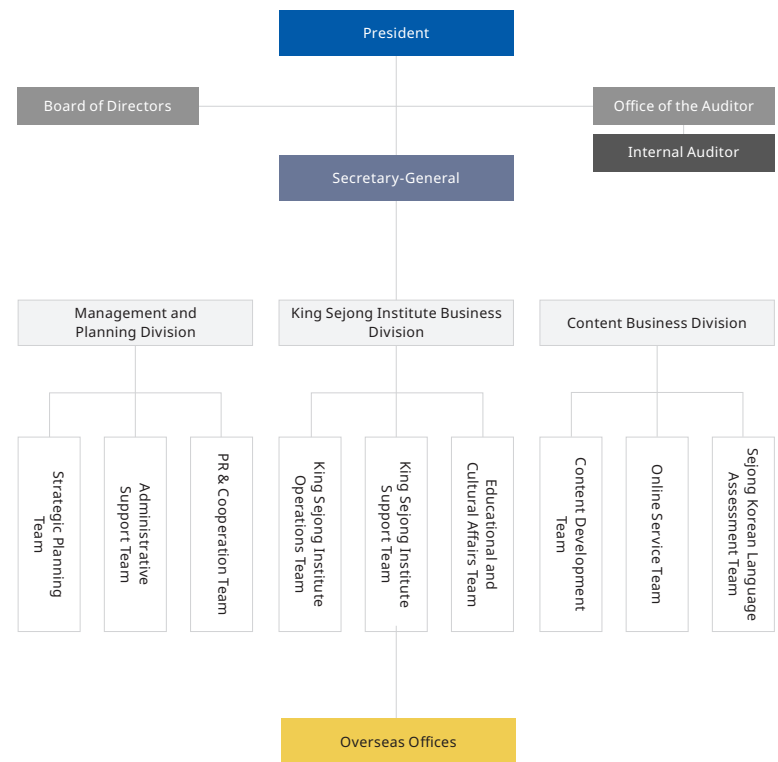
The King Sejong Institute Foundation (KSIF) is a public institution that operates under the auspices of the Republic of Korea (ROK) Ministry of Culture, Sports and Tourism that establishes and supports the King Sejong Institute (KSI), a nationally recognized brand for the dissemination of Korean language and culture abroad.

Pursuant to Article 19-2 of the Framework Act on Korean Language, the KSIF supervises all programs designed to promote Korean language and culture overseas.

2007	•	Founding of the King Sejong Institute
2012	•	Launching of the King Sejong Institute Foundation Enforcement of the Framework Act on Korean Language
2013	•	Designation as a non-classified public institution Opening of the 100th King Sejong Institute
2014	•	Designation as a professional art corporation Designation as a statutory donation organization
2016	•	Integration of overseas Korean language lecturing brands into the King Sejong Institute
2017	•	Celebration of the 10th anniversary of the King Sejong Institute
2020	•	Opening of the 200th King Sejong Institute Operation of the Online King Sejong Institute (iksi.or.kr)
2021	•	Re-designation as a non-profit organization
2022	•	Celebration of the 10th anniversary of the King Sejong Institute Foundation

The KSIF is realizing the dreams of King Sejong.

All members of the KSIF are determined to actively respond to a demand for learning Korean language and culture overseas, and to provide necessary support to help KSIs spread Korean language and culture all over the world.



The KSIF operates with various roles and responsibilities.

The KSIF has been engaging in a variety of projects in an efficient manner as the central organization responsible for the communication of Korean language and culture at home and abroad.

Designation and Operation of KSIs

- Designate new KSIs
- Support the operation of KSIs
 - Administrative and budgeting education for the operation of KSIs
 - Specialized programs according to each KSI
- Evaluate the operation of KSIs and conduct on-site inspections



Reinforcement of Teacher Expertise

- Dispatch Korean language teachers overseas
- Operate training programs for KSI teachers
- Support local KSI teacher at KSIs to attain degree in Korean education
- Provide consulting services on Korean education to local KSI teacher who are not Korean nationals
- Operate KSIF teacher training centers



Promotion of Korean Cultural Exchanges

- Operate the Sejong Culture Academy
- Dispatch KSI culture interns
- Hold KSI Invitational Training for Outstanding Students
- Grant KSIF scholarship to selected students



Support for Korean Language Education

- Develop and supply basic KSI curriculum
- Develop and supply special KSI curriculum
- Develop and supply online KSI curriculum
- Develop and supply questionnaires to evaluate the level of achievement by course
- Develop and supply Korean language learning and teaching materials
- Develop and execute Sejong Korean language Assessment (SKA)



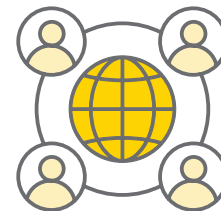
Online Learning Support

- Online KSI (www.iksi.or.kr)
 - Provides Korean language and culture lectures through an online learning platform.
- Nuri Sejonghakdang (nuri.iksi.or.kr)
 - A portal website that provides various materials for Korean language students and teachers
- Operates the Metaverse King Sejong Institute (zep.us/@ksif).
- Develop and supply smart learning content



Global Networking

- World Korean Educator Conference
- Hold workshops in different locations of KSIs



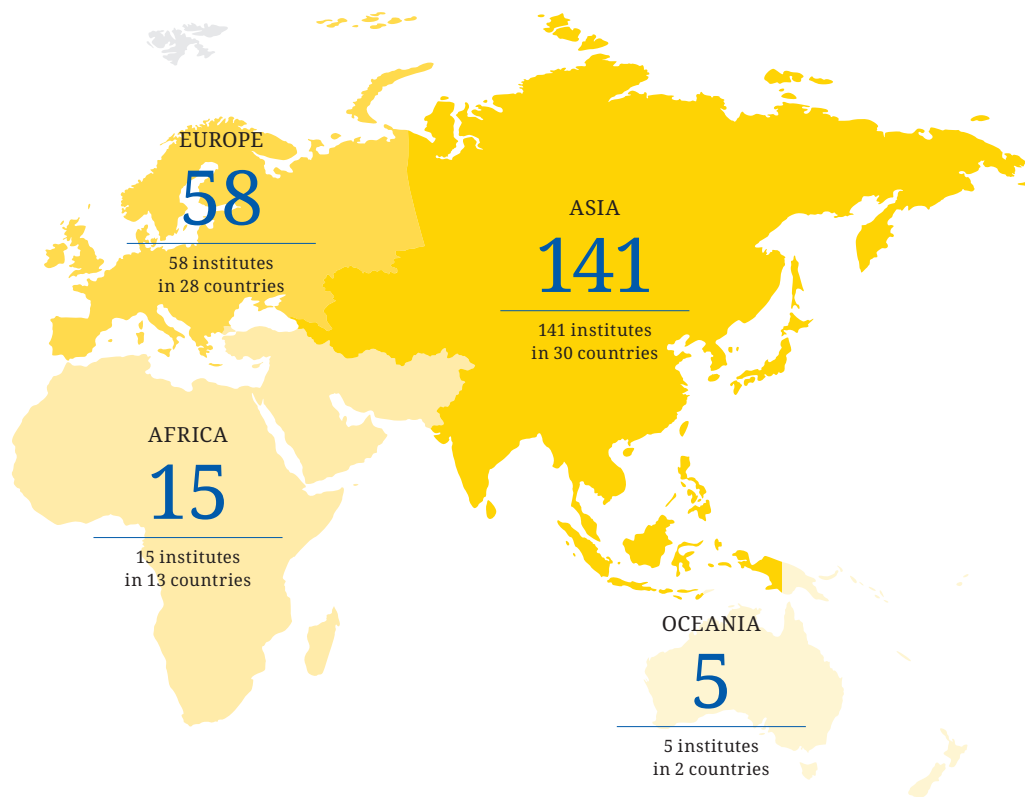
Promotion and Sponsorship

- Promote KSIs
- Communicate and cooperate with other organizations
- Publish periodicals
- Issue press releases and monitor the media
- Attract sponsors and manage sponsor programs

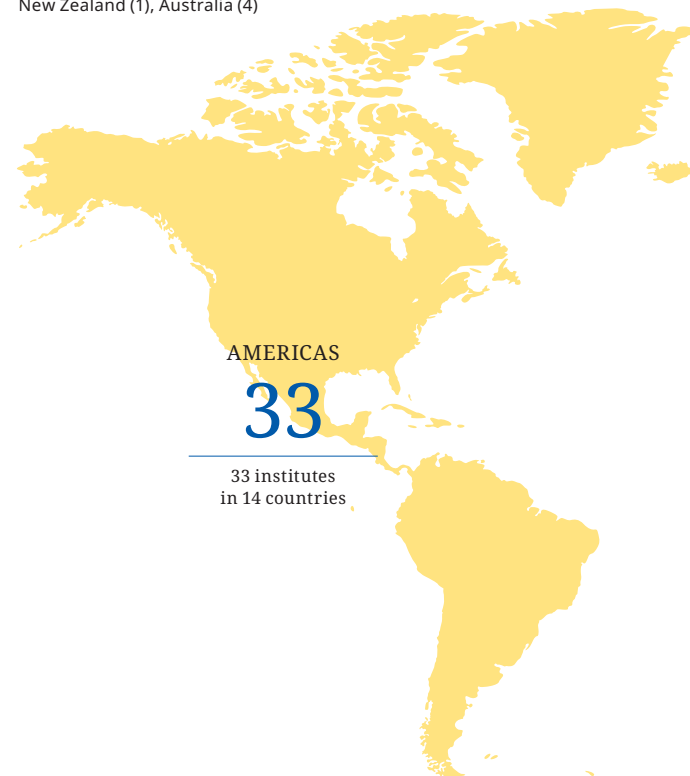


The KSIF has a global network of 252 institutes in 87 countries.

(as of July, 2025)



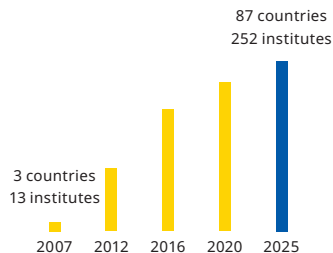
Asia	South Korea (1), Nepal (1), East Timor (1), Laos (2), Malaysia (3), Mongolia (4), Myanmar (1), Bahrain (1), Bangladesh (1), Vietnam (21), Saudi Arabia (1), United Arab Emirates (4), Azerbaijan (1), Jordan (1), Uzbekistan (9), Iran (1), India (7), Indonesia (9), Japan (16), China (21), Kazakhstan (4), Cambodia (5), Kuwait (1), Kyrgyzstan (5), Tajikistan (2), Thailand (6), Turkmenistan (1), Pakistan (1), Palestine (1), Philippines (9)
Europe	Germany (5), Latvia (1), Russia (8), Romania (1), Luxembourg (1), Lithuania (2), Belgium (2), Bulgaria (1), Serbia (1), Sweden (2), Spain (2), Slovakia (1), Slovenia (1), Iceland (1), Estonia (1), United Kingdom (4), Austria (1), Ukraine (1), Italy (2), Georgia (1), Czech Republic (1), Croatia (3), Turkey (2), Portugal (1), Poland (3), France (4), Finland (1), Hungary (4)
Americas	Mexico (2), United States (13), Brazil (5), Argentina (1), Haiti (1), Ecuador (1), El Salvador (1), Uruguay (1), Chile (1), Canada (3), Colombia (1), Cuba (1), Paraguay (1), Peru (1)
Africa	Nigeria (1), South Africa (1), Madagascar (1), Malawi (1), Morocco (1), Botswana (1), Eswatini (1), Uganda (1), Egypt (3), Kenya (1), Cote d'Ivoire (1), Tanzania (1), Tunisia (1)
Oceania	New Zealand (1), Australia (4)



King Sejong Institutes (as of July, 2025)



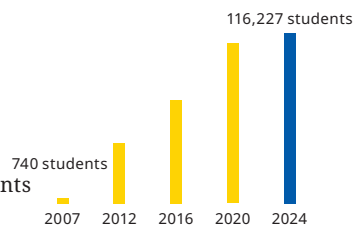
87 countries
252 institutes



KSI Students by Year (as of Dec. 2024)



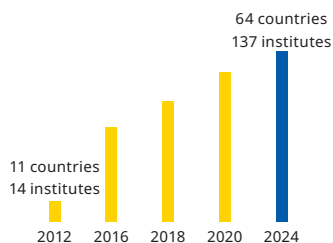
116,227 students



KSI Teachers Dispatched Overseas (as of Dec. 2024)

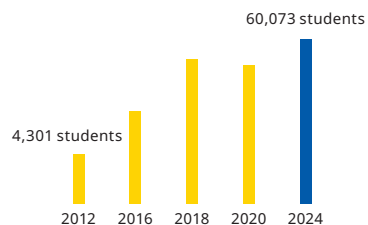


64 countries
137 institutes



Sejong Culture Academy Operation Status (as of Dec. 2024)

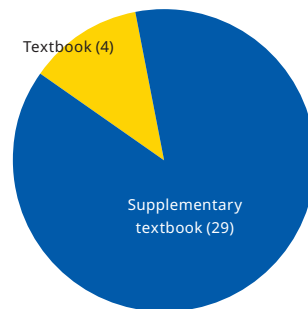
45 countries
92 institutes
60,073 students



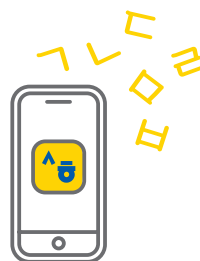
KSI Educational Materials (as of Dec. 2024)



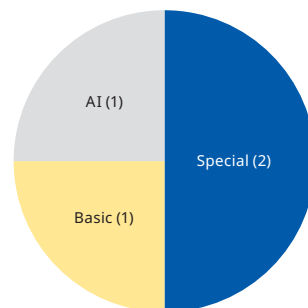
53 types



KSI Smart Learning Content (as of Aug. 2025)



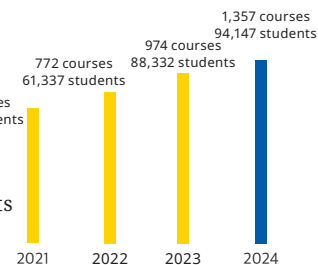
3 types 4 ea



Online KSI Courses and Students (as of Dec. 2024)



1,357 courses
94,147 students



Major KSIF Events (as of Dec. 2024)



World Korean Educator Conference

16 times

KSI Invitational Training for Outstanding Students

15 times

KSI Speaking & Writing Contest

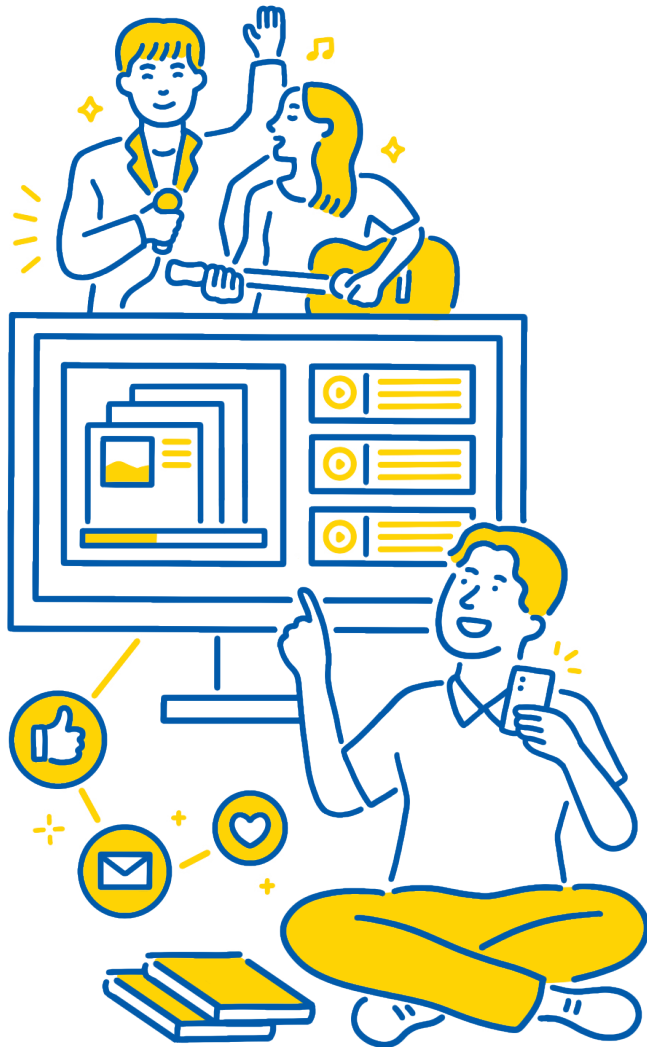
11 times

KSI Regional workshops

12 years

* Speaking and writing have been merged as one contest since 2019.

The KSIF supports KSIs all over the world.



Appointment of KSI Ambassadors

We appoint persons who represent Korean culture and art as KSI ambassadors to help promote KSI to people who are interested in Korean language and culture.

Promotion of KSIs

We introduce KSIF and KSI to the press and media, and provide clippings of new articles about Korean language and culture.

Publication of Promotional Materials

The KSIF publishes the annual magazine King Sejong Institute, monthly online newsletter Monthly Knock-knock, and a KSI Learner Casebook Dream with news from King Sejong Institutes around the world.



Social Media Channels

We actively communicate with people all around the world who are interested in Korean language and culture through social media.



Blog

blog.naver.com/nurisejong



YouTube

youtube.com/LearnTeachKorean



Instagram

instagram.com/king.sejong.institute



Facebook

facebook.com/sejonghakdang.org



Weibo

weibo.com/onlinesejong

The KSIF supports global citizens to learn and love Korean language and culture.

Major Contributions

KSIF Events

Sponsors provide support for major events held by the KSIF such as the "KSI Invitational Training for Outstanding Students" as well as the "KSI Writing and Speaking Contest."



KSI Students

Sponsors provide scholarships and allowances to KSI students during their study in Korea.



KSI Establishment

Sponsors work with the KSIF to establish company-affiliated KSIs overseas.



KSI Learning Materials

Sponsors provide textbooks and learning materials to facilitate the smooth operation of KSIs.

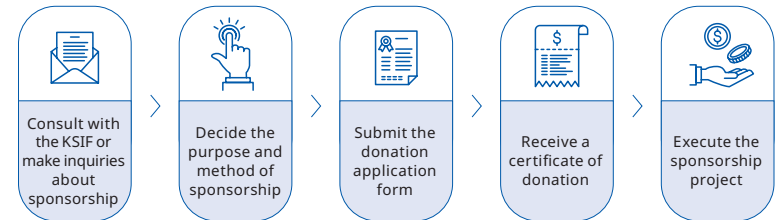


* The KSIF is open to other forms of Contributions designed to promote Korean language and culture overseas, and determines implementation through a collaborative review.

Types of Contributions

General Donation	Donors make donations to the KSIF without specifying their desired purpose.
Specific Donation	Donors make donations to the KSIF by specifying particular purposes, such as location, target group or project within the scope of the KSIF's original purpose.

Procedure



Contact: donation@ksif.or.kr

Major Sponsors

* Sponsoring Organizations for the Recent 5 Years



FAQ

Q. What is the difference between the KSIF and KSI?

- A. The KSIF is a public institution that operates under the auspices of the Ministry of Culture, Sports and Tourism, and KSI is a major brand of the KSIF that teaches Korean language and culture. The KSIF is responsible for designating and managing KSIs all over the world.

Q. Where are KSIs located?

- A. KSIs are operated in countries around the world. As of July 2025, there are 252 KSIs in 87 countries where there is a demand for Korean language and cultural education. The KSIF is headquartered in Seoul, Republic of Korea, and it manages and supports KSIs all over the world.

Q. I am not Korean. I would like to study Korean language at a KSI. What should I do?

- A. Visit the official KSIF website to see the locations and current status of KSIs all over the world. (Access the KSIF website (www.ksif.or.kr) > Business > Designation and Operation of KSIs > search by continent/country)

Please contact the KSIF for more information on how to enroll in a KSI. If you are unable to attend a KSI in person, you can also enroll in online KSI courses to learn Korean. You can take an online Korean course that is most appropriate for your current skills level after taking an Online Diagnostic Assessment. (Access the Online KSI (www.iksi.or.kr) > Online KSI Info > Korean Level Test > Korean Courses)

Q. What does each division in KSIF do?

- A. KSIF comprises three divisions.
- Management and Planning Division: Handles matters related to the operation of KSIF, and promotes and supports KSIs.
 - King Sejong Institute Business Division Designates and manages KSIs, dispatches Korean teachers, and operates scholarship programs for students, etc.
 - Content Business Division: Develops curricula and textbooks, manages the online platform, and executes Sejong Korean language Assessment (SKA), etc.

Q. Does the KSIF have an overseas office?

- A. Yes, it does. The KSIF operates KSI centers in the US, Vietnam, France and Sharjah(UAE)



King Sejong Institute Foundation

11F, 13F Arirang Tower, 2351, Nambusunhwan-ro, Seocho-gu, Seoul
+82-2-3276-0700
www.ksif.or.kr

Operation of King Sejong Institute



- I King Sejong Institute Foundation
- II Operation of King Sejong Institute**
- III Education of King Sejong Institute
- IV Educational Content of King Sejong Institute Foundation

The KSIF is creating a world where everyone dreams through Korean language and culture.



4 KSIs AROUND THE
WORLD

6 OPERATION OF THE KSIs

8 SUPPORT FOR THE KSIs I

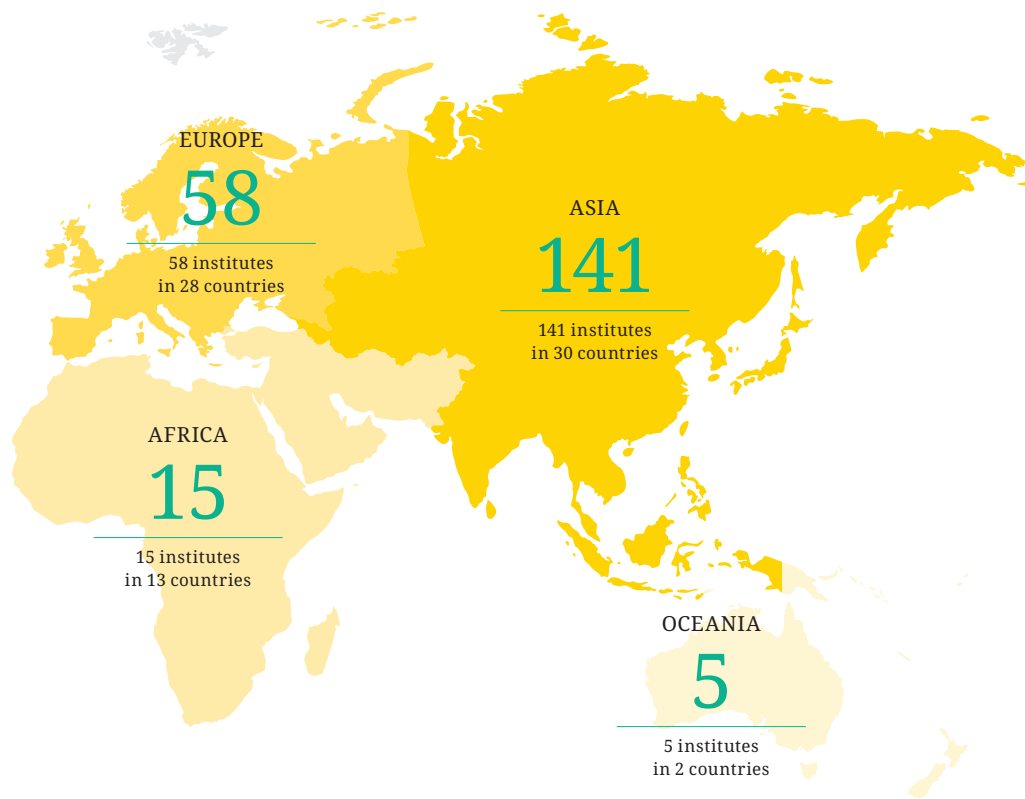
10 SUPPORT FOR THE KSIs II

12 DIVERSE SCHOLARSHIP
OPORTUNITIES

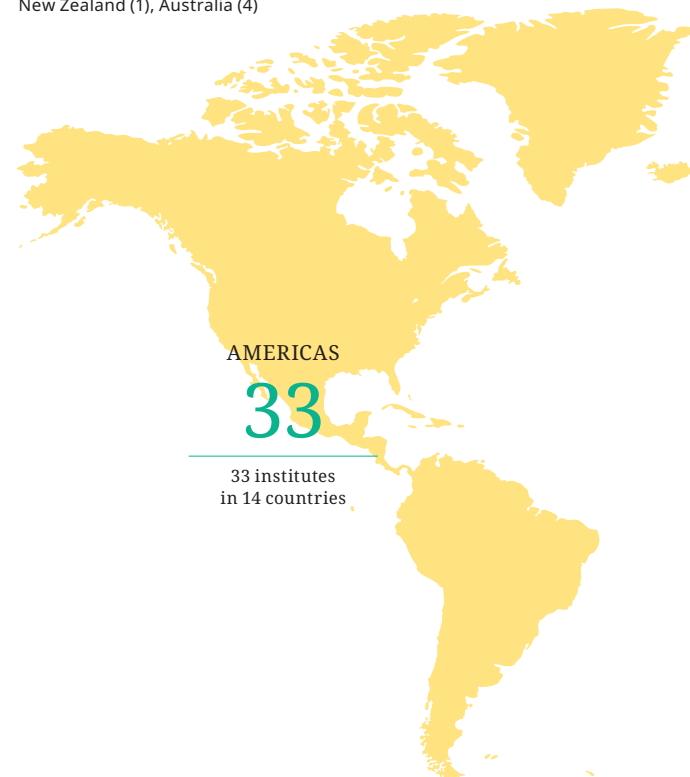
14 ESTABLISH THE KSI
NETWORK

The KSIF has a global network of 252 institutes in 87 countries.

(as of July, 2025)



Asia	South Korea (1), Nepal (1), East Timor (1), Laos (2), Malaysia (3), Mongolia (4), Myanmar (1), Bahrain (1), Bangladesh (1), Vietnam (21), Saudi Arabia (1), United Arab Emirates (4), Azerbaijan (1), Jordan (1), Uzbekistan (9), Iran (1), India (7), Indonesia (9), Japan (16), China (21), Kazakhstan (4), Cambodia (5), Kuwait (1), Kyrgyzstan (5), Tajikistan (2), Thailand (6), Turkmenistan (1), Pakistan (1), Palestine (1), Philippines (9)
Europe	Germany (5), Latvia (1), Russia (8), Romania (1), Luxembourg (1), Lithuania (2), Belgium (2), Bulgaria (1), Serbia (1), Sweden (2), Spain (2), Slovakia (1), Slovenia (1), Iceland (1), Estonia (1), United Kingdom (4), Austria (1), Ukraine (1), Italy (2), Georgia (1), Czech Republic (1), Croatia (3), Turkey (2), Portugal (1), Poland (3), France (4), Finland (1), Hungary (4)
Americas	Mexico (2), United States (13), Brazil (5), Argentina (1), Haiti (1), Ecuador (1), El Salvador (1), Uruguay (1), Chile (1), Canada (3), Colombia (1), Cuba (1), Paraguay (1), Peru (1)
Africa	Nigeria (1), South Africa (1), Madagascar (1), Malawi (1), Morocco (1), Botswana (1), Eswatini (1), Uganda (1), Egypt (3), Kenya (1), Cote d'Ivoire (1), Tanzania (1), Tunisia (1)
Oceania	New Zealand (1), Australia (4)



The KSIF designates and manages KSIs all over the world.

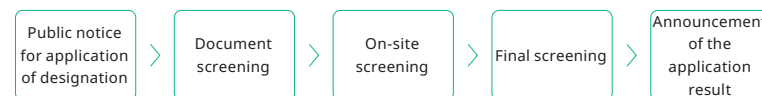


Designation of New KSIs

The KSIF designates KSIs all over the world so that people who want to learn Korean can access Korean and Korean culture more easily in their home countries.

Designation Procedure

A new KSI is designated according to the following procedure.



* The details of the schedule and procedure are subject to change.

Types of KSI

General KSI	<p>Operated by support funds from domestic/international government agencies, local municipalities, Korean undergraduate/graduate schools, and non-profit organizations</p> <ul style="list-style-type: none"> - Direct: KSIs operated by local organizations outside Korea - Joint: KSIs operated by local organizations and Korean organizations through a MOU
Collaborative KSI	<p>Operated without receiving support funds by municipalities, overseas Korean government agencies, non-profit organizations under the Act on the Management of Public Institutions, and private companies</p>
KSI Center	<p>KSIF directly establishes or designates KSIs that are tailored to regional characteristics, supports and manages them, and operates them to ensure the sustainable dissemination of the Korean language.</p>
KSI Korean Cultural Center & Korean Education Center	<p>KSIs operated by the Korean Culture Center and Korean Education Center to provide Korean language courses under the same brand of KSI</p>

The KSIF supports the stable operation of KSIs and the education of Korean language and culture.



Support for Budget Operation for KSIs

The KSIF allocates budgets to KSIs by considering the size of the institute and the cost of living in the country to facilitate efficient operation of KSIs.



Dispatch of Korean Language Teachers

The KSIF dispatches licensed Korean language teachers to KSIs all around the world in order to narrow the gap in education between different regions, and provide high quality Korean language education at all KSIs.

Educational Courses of Korean Language and Culture

The KSIF provides the basic curriculum for all KSIs to ensure consistency in the Korean language education across different KSIs in the world, and runs the Korean culture program called Sejong Culture Academy.

Textbooks and learning materials on Korean language and culture

The KSIF develops textbooks and teaching materials on Korean language and culture that are used at KSIs.



The KSIF support the operation of KSIs based on the unique characteristics of the country and learning environment.



KSIF Specialization Project

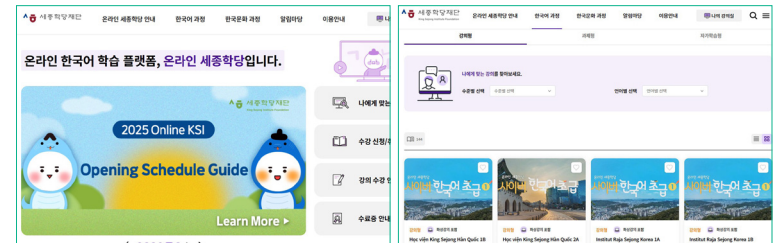
The KSIF runs unique Korean language and cultural programs customized to the characteristics of each country.



Online Korean Language and Cultural Courses

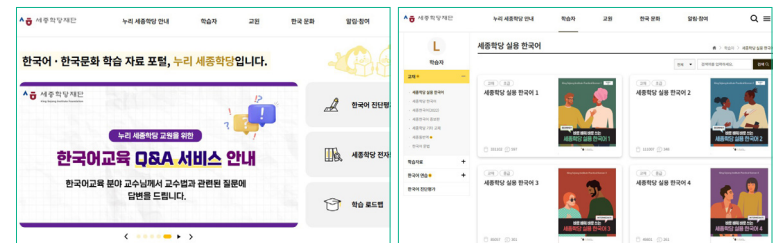
- Online KSI (www.iksi.or.kr)

This online platform supports Korean language classes and learning on both PC and mobile devices.



- Nuri Sejonghakdang (nuri.iksi.or.kr)

The KSIF provides educational materials such as textbooks and teaching materials that are essential for learning Korean language and culture.



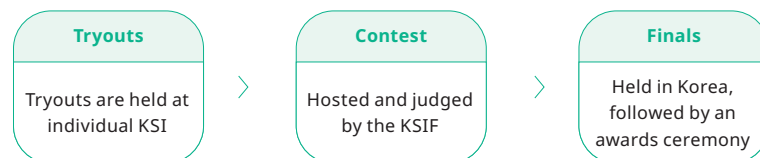
The KSIF offers opportunities to study in Korea for students with excellent Korean proficiency.



KSIF Speaking & Writing Contest

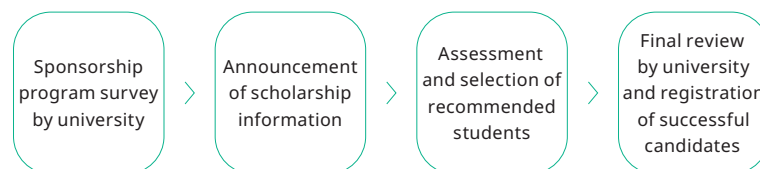
The KSIF hosts the KSIF Speaking & Writing Contest every year to create an extra source of motivation for KSI students.

The Foundation invites learners who have advanced through regional preliminaries to participate in Korea for the 'KSIF Invitational Training for Outstanding Students' hosted by the King Sejong Institute. Additionally, finalists in the competition are awarded opportunities for language study at domestic universities.



Scholarships for KSI Students

In every first/second half of the year, Korean universities provide current KSI students or graduates with opportunities to undertake a course and language program in Korea as well as scholarships that cover the tuition fees and part of boarding fees.



The KSIF gathers Korean educators and provides venues for exchanges.



World Korean Educator Conference

The KSIF invites global Korean language educators to Korea to share the latest Korean language teaching practices, case studies, and various teaching methodologies for Korean language and cultural education to strengthen professional competencies.

General Training

Special lectures on the latest practices in Korean language education overseas and model cases are shared.



Korean Language and Cultural Training

Theoretical and practice training are given to strengthen Korean language teachers' competencies related to Korean language and culture.



KSIF Regional Workshops

The KSIF devices ways to facilitate cooperation between local KSIs and officials from Korean education agencies, and ways to develop Korean language education in the region.



FAQ

Q. I would like to run a KSI. What should I do?

- A. The KSIF starts to receive applications for new KSIs in November each year. Visit the KSIF website (www.ksif.or.kr) to check the News and Promotion. Organizations that wish to run KSI should submit a designation application to KSIF to be able to open an official KSI through a review. KSI is a brand that is directly operated by the Korean government, and represents Korean language and cultural education. Applications from individuals and organizations who wish to run a KSI for for-profit purposes will not be accepted.

Q. How many types of KSI are there?

- A. There are four types of KSI.
(i.e. General; Collaborative; Center; and Culture/Education Center-run)

Q. What are the differences between the different types of KSI?

- A. ① General KSI is the most common type of KSI. There are standard KSIs (independent KSIs) that are run directly by local organizations and collaborative KSIs that are jointly run by local organizations and ROK organizations. Standard KSIs are run by support funds provided by the KSIF.
- ② On the contrary, collaborative KSIs are run by municipalities, overseas Korean government agencies overseas, public agencies, private companies, and non-profit organizations without receiving any funds from the KSIF.
- ③ KSI Centers support and manage KSIs in accordance with regional characteristics and are established or designated directly by KSIF to ensure the sustainable dissemination of the Korean language.
- ④ Korean language courses provided by Korea Culture Centers (under the Ministry of Culture, Sports and Tourism) and Korea Education Centers (under the Ministry of Education) overseas have been integrated into a single brand of KSI. The KSIF dispatches KSI teachers to Korea Culture Centers and Korea Education Centers, and those KSIs operated by Korea Culture Centers and Korea Education Centers also use the same basic KSI curriculum.

Q. What is the organizational structure of KSI?

- A. KSI consists of the director responsible for the overall operation of the institute, operational personnel in charge of operating staff, and teaching staff who give Korean language and cultural classes. KSI teaching staff is divided into two types: dispatched teachers who are sent by the KSIF to overseas KSIs, and local teachers who are hired directly by KSIs.

Q. Are all KSI courses free?

- A. Tuition fees for KSI courses vary between individual KSIs. According to the KSIF Management Policy, KSIs can charge tuition fees to students within the legal boundaries of the host country.

Q. Who are the target students for KSIs?

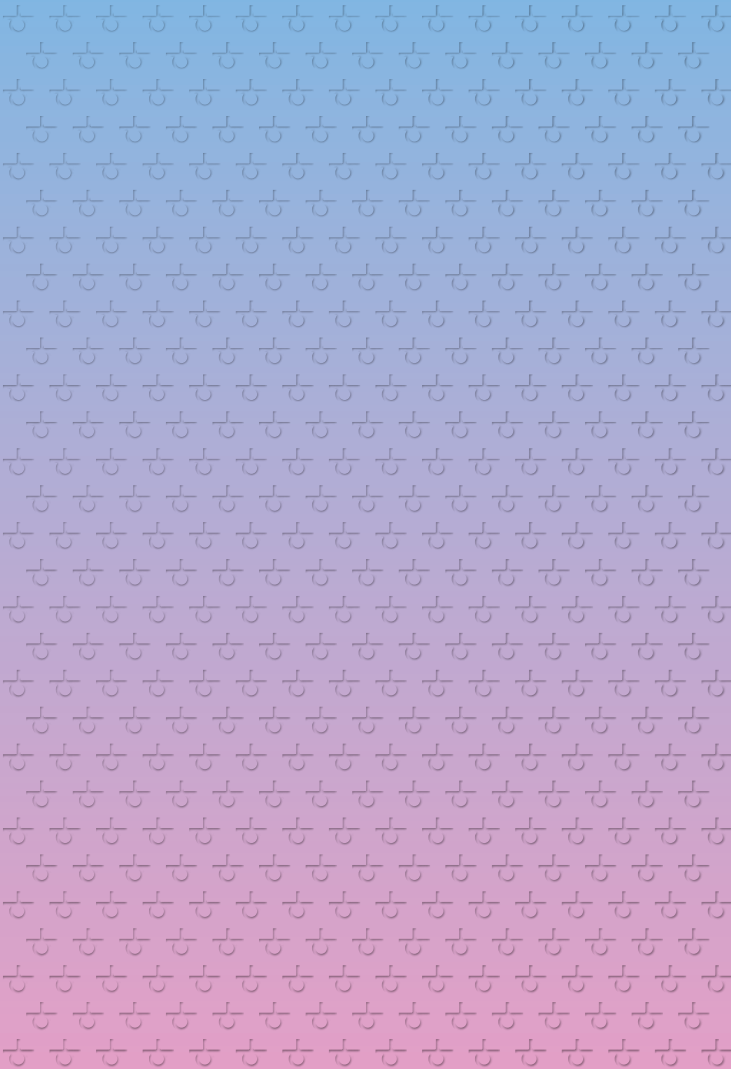
- A. The target students are local adults who want to learn Korean as a foreign language or second language.



King Sejong Institute Foundation

11F, 13F Arirang Tower, 2351, Nambusunhwan-ro, Seocho-gu, Seoul
+82-2-3276-0700
www.ksif.or.kr

Education of King Sejong Institute



- I King Sejong Institute Foundation
- II Operation of King Sejong Institute
- III Education of King Sejong Institute**
- IV Educational Content of King Sejong Institute Foundation

The KSIF is creating a world where everyone dreams through Korean language and culture.



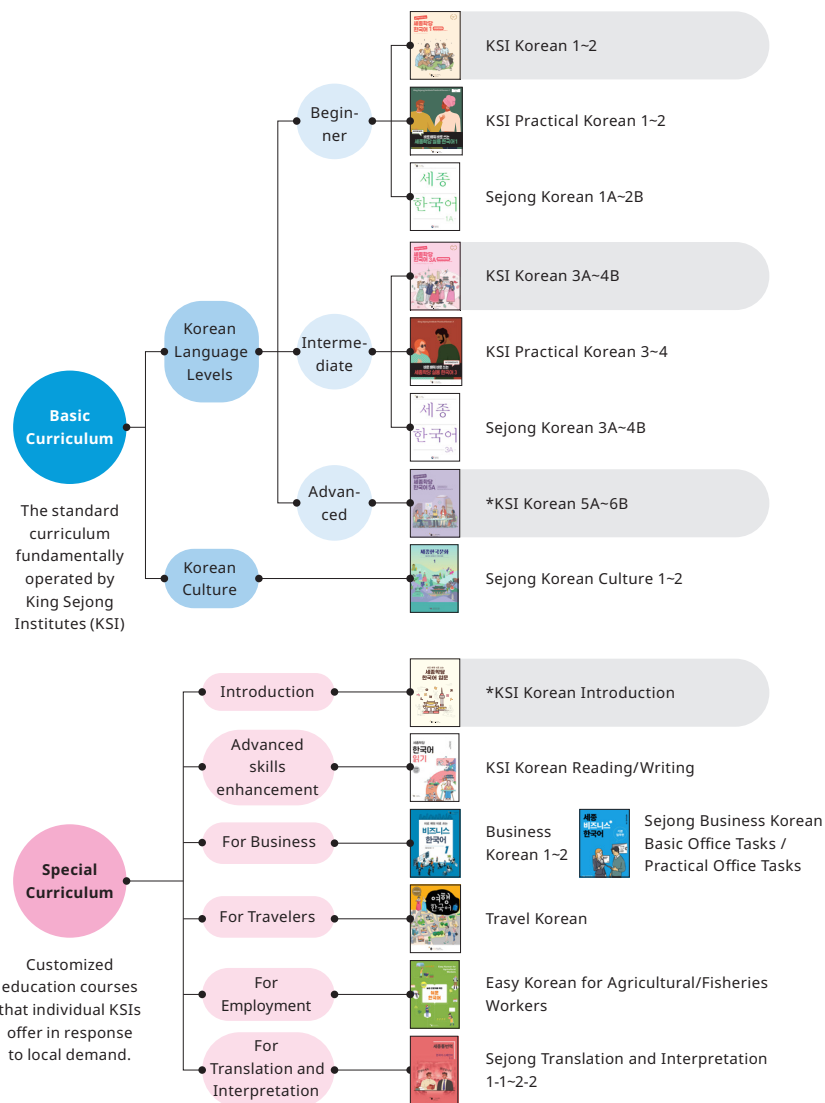
4	KSI CURRICULA
6	TEXTBOOKS AND LEARNING MATERIALS
8	DISPATCH KOREAN LANGUAGE TEACHER
10	TRAINING KOREAN LANGUAGE TEACHER
12	SUPPORT FOR KOREAN CULTURE EDUCATION
14	INVITE OUTSTANDING KSI STUDENTS

The KSIF provides standardized curricula for all KSIs across the world.



Curricula

The KSIF develops curricula to ensure that all KSIs provide standardized education. KSI students can learn Korean language and culture with the same standard and efficiency anywhere in the world.



* Can be used in Online KSI (the standard textbook for online and face-to-face courses)

Textbooks

Textbooks for Basic KSI curriculum



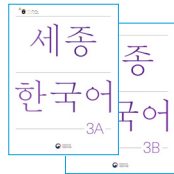
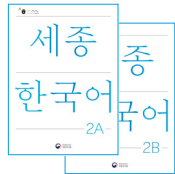
- **KSI Korean 1 - 6B**
KSI Standard Korean Textbook is designed to help Beginner, Intermediate, and Advanced level Korean learners improve their communication skills.
(Can be used for Online KSI course, 'Cyber Korean Beginner and Intermediate')



- **KSI Practical Korean 1 - 4**
This textbook is focused on speaking and listening to improve the practical communication skills for Korean learners outside Korea.



- **Sejong Korean 1A - 4B**
This textbook is focused on conversation to improve the practical communication skills for Korean learners outside Korea.



- **Sejong Korean Culture 1-2 (Revised Edition)**
This textbook for learning a wide range of Korean culture, from traditional to contemporary.



Textbooks for Special KSI curriculum



- **KSI Korean Introduction**
A textbook for beginners to learn Korean Hangul and basic vocabulary, usable in the online King Sejong Institute's 'Introduction to Cyber Korean' course.



- **Travel Korean**
A textbook for foreign tourists to learn about Korean culture and dialogues on situations they may encounter while traveling in Korea.



- **KSI Korean Reading/Writing**
A textbook for intermediate and advanced learners to improve their Korean reading and writing skills through topics in society, literature, science, economics, and history.



- **Business Korean 1-2, Sejong Business Korean: Basic Office Tasks / Practical Office Tasks**
Textbook for learning expressions needed when working in Korean companies.



- **Sejong Translation and Interpretation 1-1-2-2**
A textbook for intermediate and advanced learners to practice translation and interpretation (Korean<->local language) on everyday and specialized topics.



- **Easy Korean for Agricultural Workers / Easy Korean for Fisheries Workers**
A textbook to learn specialized vocabulary and expressions for foreign agricultural/fishing workers in Korea.

Learning Materials

Supplementary materials that can facilitate effective learning and teaching of Korean language and culture.



- **KSI Korean Basic Vocabulary Learning Dictionary**
An elementary and intermediate vocabulary dictionary designed to help students learn Korean by themselves.
(contains 5,039 words)
* Available in 9 languages (English, Chinese, Japanese, Russian, Vietnamese, Indonesian, French, Mongolian, Thai)



- **KSI Korean Culture Learning Card**
Culture cards that consist of Korean traditional and modern culture, food, and tourist destinations.
* Front: Images of actual Korean culture; Back: Related information



The KSIF dispatches licensed Korean language teachers to KSIs overseas.



Dispatched KSI Teachers

The KSIF dispatches licensed Korean teachers to KSIs that need qualified Korean teachers. The dispatched Korean teachers work in the local KSIs, providing the KSI curriculum, developing educational materials, and re-training the KSI teaching staff in the region.

Qualifications of Dispatched Teachers

A Level

Holds a Korean teaching license (level 2 and higher)
Completed at least a master's degree in Korean education and the related field
Korean language teaching experience: 8 years or more
Teaching hours: 3,200+ hours

B Level

Holds a Korean teaching license (level 2 and higher)
Korean language teaching experience: 3 years or more, but less than 8 years
Teaching hours: 1,200–3,200 hours

C Level

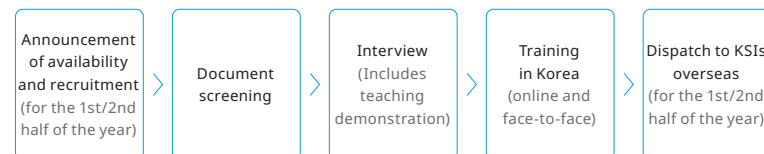
Holds a Korean teaching license (level 3 and higher)
Korean language teaching experience: 1 year or more, but less than 3 years
Teaching hours: 400–1,200 hours

D Level

Holds a Korean teaching license (level 3 and higher)
Korean language teaching experience: Less than 1 year
Teaching hours: Less than 400 hours

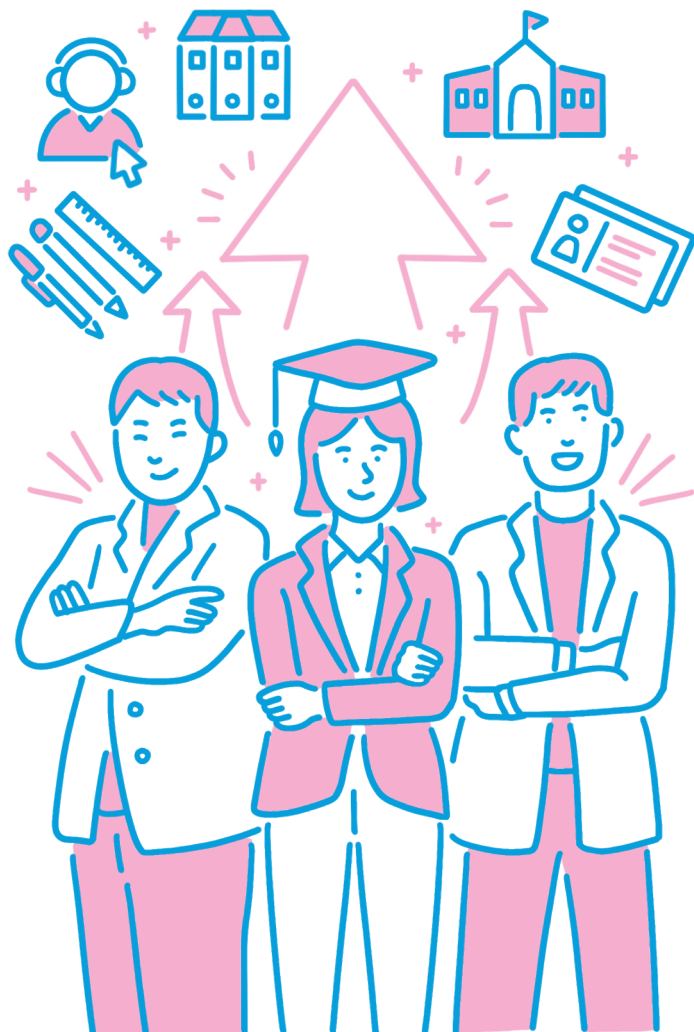
(※ For those who are expected to obtain a bachelor's or master's degree in Teaching Korean as a Foreign Language, D Level applies.)

Selection Process



Contact: korean_teacher@ksif.or.kr

The KSIF supports the continuous growth of Korean language teachers and seeks ways to strengthen their capabilities.



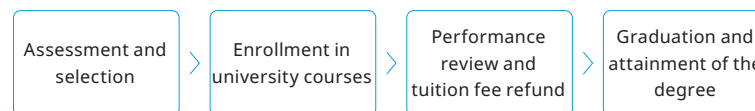
KSIF Teacher Training Centers

The King Sejong Institute Foundation offers online re-education courses for KSI instructors and business competency enhancement training. The KSIF revitalizes Korean education offered by KSIs by strengthening capabilities of KSI teachers.

Teacher Training Center Programs	Standard Curriculum	<ul style="list-style-type: none"> - Step-by-step Job Training - Real-time Workshops - Mandatory Legal Training
	Advanced Courses	<ul style="list-style-type: none"> - Competency Building and Leadership Training - One-on-one Consulting
Operation Methods	VOD and real-time online learning	

Help KSI Teachers Attain a Degree in Korean Education

The KSIF helps local Korean teachers at KSIs attain a degree in Korean education and Korean teaching license by facilitating enrollment in online university courses and subsidizing tuition fees.



Training Programs for KSI Teachers

In order to create a sustainable Korean education environment for KSIs, the KSIF provides Korean teacher training courses for local Korean teachers at KSIs and future Korean teachers.



Consulting Services on Korean Education to Local KSI Teachers

KSIF provides 1:1 custom consulting service such as standard Korean pronunciation to help local teachers improve their strengths and capabilities as non-native Korean speakers.

The KSIF promotes various Korean cultures and provides materials that help students experience Korean culture.



Sejong Culture Academy

For high-quality dissemination of Korean culture, the foundation operates the Sejong Culture Academy, which combines education and experience. The KSIF dispatches experts in Korean culture from different fields to help local students experience and understand various aspects of Korean culture in a systematic manner.



Dispatch of KSI Culture Interns

In collaboration with domestic universities, cultural interns specializing in culture and arts and related fields are selected and dispatched to KSI. These cultural interns support K-pop, Taekwondo, film, drama, and traditional Korean music courses at the local KSI for about 100 days.

Universities
apply for
participation

Receive
applicants by
university

Pre-Dispatch
Training in
Korea

Final
Selection
of Cultural
Interns

Dispatch to
KSIs

Korean Culture Experience Materials

The KSIF provides KSIs with educational materials that help students experience Korean culture more closely.



The KSIF invites outstanding KSI students to provide opportunities to explore Korean culture.



Experience Programs

The invited students experience a variety of Korean culture, exploring K-wave culture contents, cultural assets and historic sites.



Learning Programs

Students learn various aspects of Korean culture, including samulnori, K-pop, taekwondo, and traditions.



Special Programs

The KSIF hosts the final stage of the KSI Speaking & Writing Contest.



FAQ

**Q. I want to be dispatched to a KSI as a Korean language teacher.
What should I do?**

- A. The KSIF recruit Korean language teachers to be dispatched to KSIs in the first and second half of each year. The number of teachers and location are determined by the local demand. Applicants must hold a Korean teaching license (levels 1 to 3). For more information, please visit the KSIF website (www.ksif.or.kr > [News and Promotion (Promotion of KSIF) > Recruitment Information > Recruitment of Dispatched Teachers])

Q. I am a current teacher. Can I choose the country that I will be dispatched to?

- A. Yes, you can. Applicants can select one of the KSIs that are seeking to fill vacancies at the time of application. However, different KSIs in different countries would need Korean teachers during each application period. In addition, applicants must satisfy the visa conditions required by each host country. Please check the recruitment notice on the official KSIF website for more accurate information.

Q. What kind of Korean culture class can I take at KSI?

- A. The KSIF supports the establishment of Sejong Culture Academy, which offers custom Korean culture classes, by reflecting the local demand in each KSI. In addition, the KSIF works with organizations specializing in Korean culture and universities to dispatch those who studied Korean culture and art to KSIs overseas.

Q. What are “KSI Invitational Training for Outstanding Students” and “KSI Speaking & Writing Contest” held by the KSIF?

- A. The KSIF hosts the “KSI Invitational Training for Outstanding Students” by inviting KSI students who are entering the main competition for the KSI Speaking & Writing Contest. In the beginning of each year, individual KSIs hold a tryout for the KSI Speaking & Writing Contest, and select those students who will enter the main competition. The KSIF then invites the selected students to Korea, and provide opportunities to experience Korean language and culture for about a week. On the last day of the program, the KSIF holds the final stage for the KSI Speaking & Writing Contest.

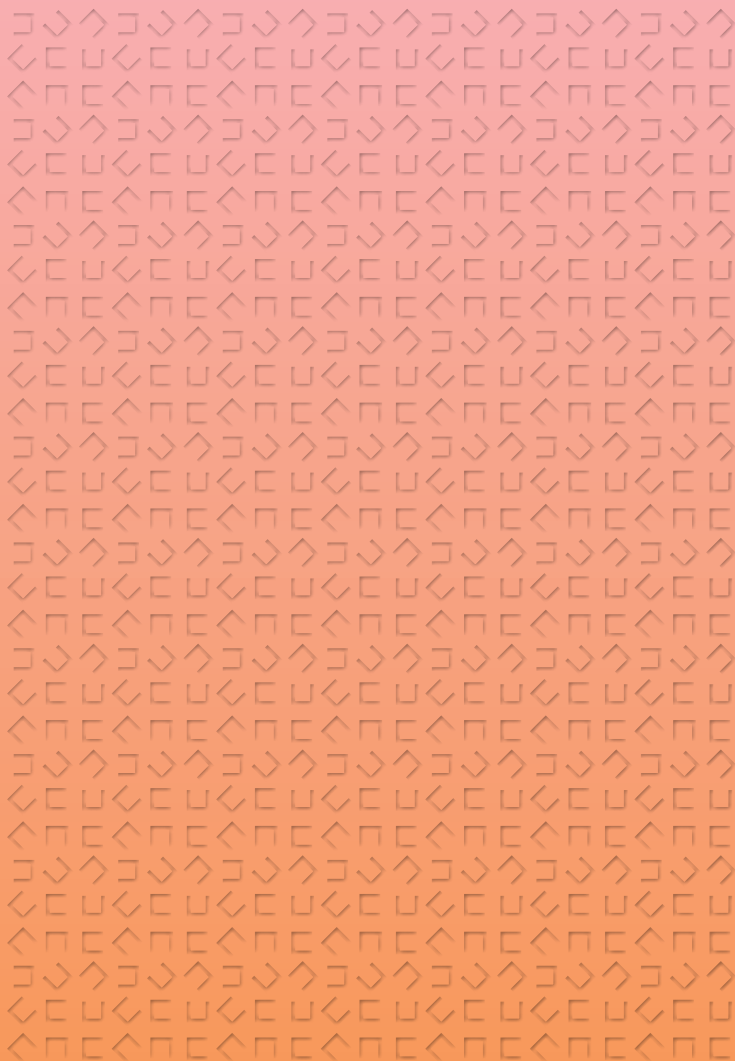
Q. What scholarship programs does KSIF offer?

- A. Each year, the KSIF provides the final contestants of the KSI Speaking & Writing Contest an opportunity to undertake a Korean language course at a Korean university. In addition, the KSIF recruits KSIF scholarship recipients through donations from Korean universities and organizations. The King Sejong Institute Foundation (KSIF) offers scholarships that can cover admission and tuition fees necessary for enrollment in domestic universities depending on the sponsorship size. Scholarship recipients have the opportunity to complete their degree and language studies in South Korea.



11F, 13F Arirang Tower, 2351, Nambusunhwan-ro, Seocho-gu, Seoul
+82-2-3276-0700
www.ksif.or.kr

Educational Content of King Sejong Institute Foundation



- I King Sejong Institute Foundation
- II Operation of King Sejong Institute
- III Education of King Sejong Institute
- IV **Educational Content of King Sejong Institute Foundation**

The KSIF is creating a world where everyone dreams through Korean language and culture.



4	ONLINE KSI
6	NURI SEJONGHAKDANG
8	METaverse KSI
10	ONLINE LEARNING CONTENTS
12	SMART LEARNING CONTENTS
14	SEJONG KOREAN LANGUAGE ASSESSMENT

We operate the online Korean language learning platform, Online KSI.







About

Online King Sejong Institute is an online learning platform which enables students to learn Korean language and culture without time and space constraints.



Visit website

Main Features

-  Students can learn Korean anytime, anywhere.
-  Students can take an online test to find out the most suitable course for their current level of Korean proficiency.
-  Students can enroll in Korean language courses ranging from beginner to advanced levels.
-  Students can receive 1:1 online feedbacks from the teaching staff.

Curriculum

Korean Language Course

It is an education course for standard online Korean language course takers. Teachers in charge of each course manage enrolled students, providing real-time online lectures, 1:1 feedbacks on assignments, and so on.

Korean Culture Course

It is an education course for standard online Korean culture course takers. Korean culture experts provide theoretical and practical lectures on K-pop, taekwondo, Korean food, and more.

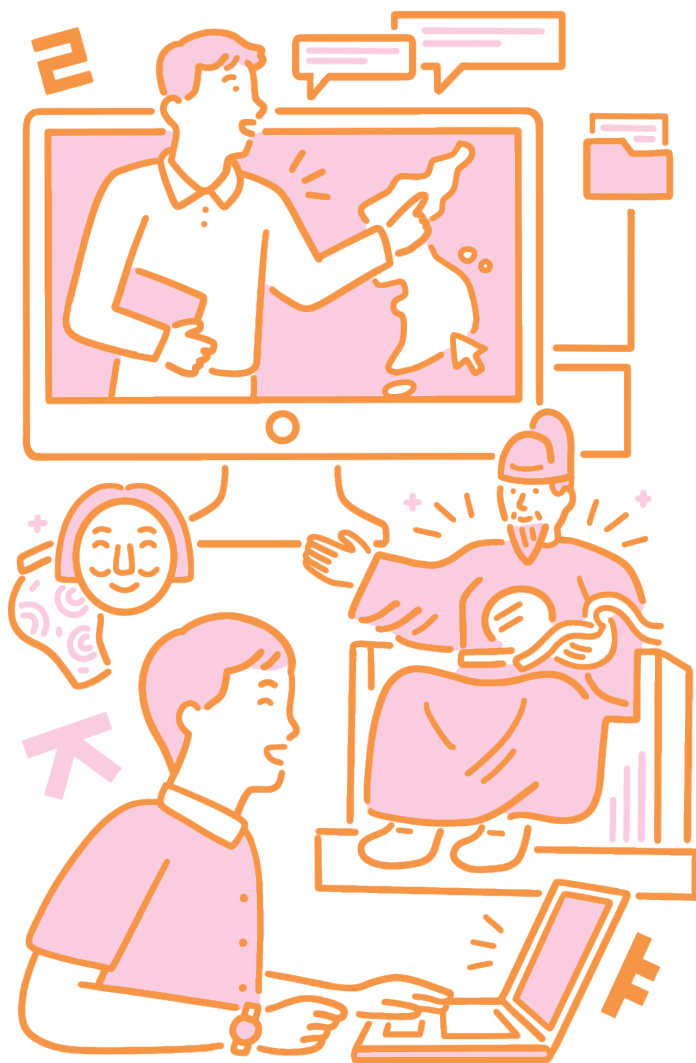
Collaboration Online King Sejong Institute

It is an education course operated collaboratively by KSI and affiliated organization. It provides customized Korean language courses that reflect the characteristics of students from different organizations.

King Sejong Institute e-Class

It is a course curriculum for local KSI students. KSI teachers all around the world manage the students' learning process by customizing to the unique characteristics of individual KSI.

We operate the Korean language and culture learning resource portal, Nuri KSI.



About

Nuri Sejonghakdang is a portal website about Korean language and culture that students and teachers can use. It provides educational materials essential for learning and teaching Korean language.



Visit website

Main Features



You can watch various videos about Korean culture.



You can find and access various educational materials about Korean language and culture, which can be utilized in Korean language classes.



It provides textbooks and learning materials for different skill levels and learning objectives.



It provides free online training courses for Korean language teachers.

Main Content

For Learners	Textbooks and Learning Materials	Korean language textbooks and supplementary resources
	Korean Language Practice	Grammar quizzes, speaking practice, writing practice
	Korean Level Test	A diagnostic assessment to begin Korean language learning
For Teachers	Textbooks and Guides	Teaching manuals
	Teaching Resources	Supplemental class materials, lesson plans
	Community	Ask questions about Korean language education, share resources
Korean Culture	Hallyu	Korean cultural content (K-pop, dramas, entertainment shows)
	Korean Information	General information about Korea (travel, daily life, traditions)

The KISF operates an online real-time Korean conversation course at the Metaverse King Sejong Institute, a space for real-time communication.



Introduction to Metaverse KSI

A virtual space where Korean language learners from around the world can meet in real time, communicate in Korean, and experience Korean culture.



Visit website



Key Features

- Practice speaking by conversing in Korean with teachers and learners from around the world.
- Experience Korean life and culture virtually through Korean-themed spaces created in the metaverse.
- Participate in various Korean language and culture games and join Korea-related events.



Online Real-Time Korean Conversation Courses

Take real-time Korean conversation classes using the metaverse.

- Experience immersive conversation classes by joining as an avatar in a metaverse classroom.
- Study intermediate and advanced Korean speaking skills twice a week for 8 weeks at your preferred time.
- Receive structured learning support through the standard model of metaverse-based Korean language classes.

The KSIF provides online learning content to help students improve the depth and breadth of their Korean language skills and knowledge in Korean culture.



Online Korean Language Learning Courses



KSI Korean

The courses are based on the international standard curriculum for Korean language education, and includes lectures, practice activities, and assignments.



Korean Language for Business

The course teaches expressions that are commonly used in business settings, including interview preparations and daily office life in Korea.



Sejong Korean Conversation

The course uses web dramas and 1-minute briefings from news presenters to teach conversational Korean expressions that can be useful in real life.



Korean Language for Foreign Workers

It is an online Korean course that is structured around Standard Textbook for Test of Proficiency in Korean for Employment Permit System (EPS-TOPIK).

Online Content



Short Form Battles! Everyone's K-Culture

This is an original web variety show produced by the King Sejong Institute Foundation, featuring foreigners enjoying and experiencing trending K-items they are most curious about.



Sejong Correspondent

Content featuring outstanding KSI learners who study abroad in Korea, experiencing and introducing Korean culture and daily life firsthand.



K-Chat: Travel in Korea

The Korean language learning content is designed for foreign viewers who wish to learn useful Korean expressions while traveling in Korea.



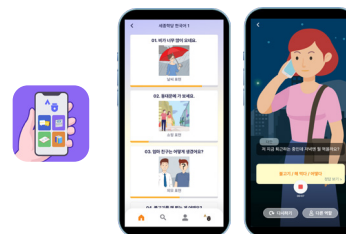
Sejong Restaurant (Sestaurant)

Content that provides fun, easy-to-follow Korean food recipes so anyone can cook Korean cuisine themselves.

The KSIF provides a Korean learning app to help learn Korean easily on your smartphone.



Integrated Korean Learning App



Mobile KSI

Based on the content of the KSI Korean textbook, users can easily learn grammar, vocabulary, and conversation with one app.

- Personalized Learning with Level Tests
- Content tailored to each level (beginner, intermediate, advanced)
- One-on-one role-play conversation practice
- Character collection to enhance learning engagement

Artificial Intelligence (AI) and Augmented Reality (AR) Learning Apps

KSIF AI Teacher

You can practice Korean conversations with artificial intelligence (AI). By engaging in direct dialogue, you can learn a variety of expressions needed in daily life, gatherings, and other situations.

KSIF Easy Korean for Agricultural/Fisheries Workers

Foreign workers employed in Korea's agricultural and fisheries industries can repeatedly practice listening and speaking, focusing on essential Korean vocabulary, expressions, and grammar required in the field. The "Today's Lesson" feature supports efficient Korean learning in just 15 minutes a day.



Sejong Business Korean



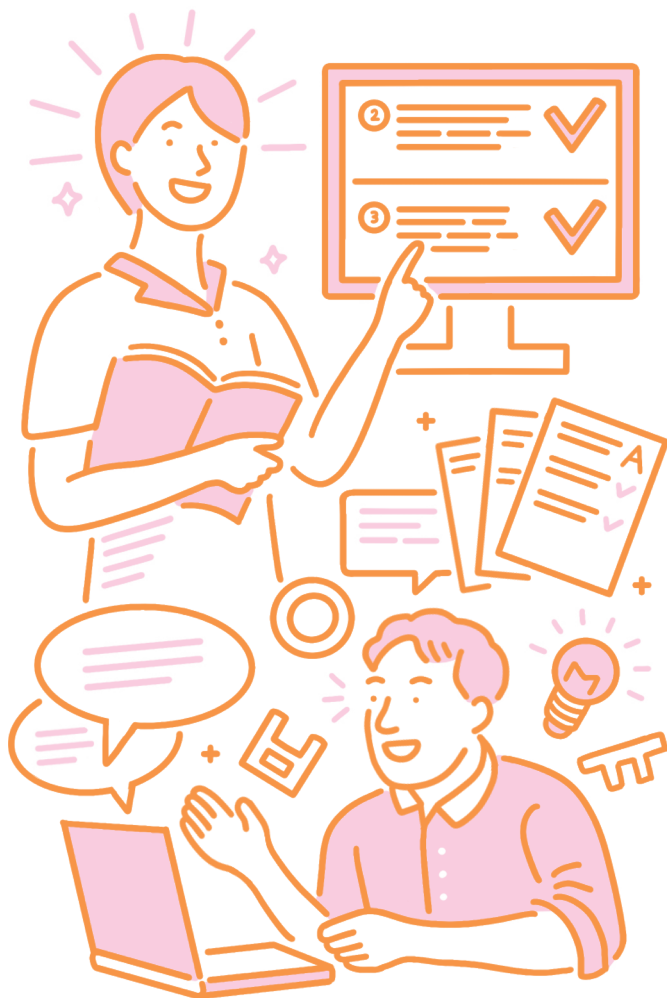
You can learn practical Korean for business through sample dialogues tailored to major industries.

KSIF Learning App Introduction Website



app.ksif.or.kr

The KSIF conducts its comprehensive SKA(Sejong Korean language Assessment).



Sejong Korean language Assessment (SKA)

The SKA is a Korean language evaluation organized by the KSIF, a Korean language dissemination organization under the Ministry of Culture, Sports, and Tourism.

It comprehensively measures the Korean language communication skills of King Sejong Institute graduates and current and future learners.



Visit Website

Types of Sejong Korean Language Assessment (SKA)

Category	Sejong Korean Language Assessment (SKA)	Adaptive Sejong Korean Language Assessment (ISKA)
Assessment Content	Speaking, Listening, Reading, and Writing Korean language communication skills	
Number of Items	A total of 113 items Listening: 50 items, Reading: 50 items, Speaking: 8 items, Writing: 5 items	A total of 72 items Listening: 30 items, Reading: 30 items, Speaking: 8 items, Writing: 4 items
Assessment Time	A total of 170 minutes Listening: 50 minutes, Reading: 50 minutes, Speaking: 20 minutes, Writing: 50 minutes	A total of 120 minutes Listening: 30 minutes, Reading: 30 minutes, Speaking: 20 minutes, Writing: 40 minutes
Implementation Method	PBT: Listening, Reading, Writing iBT: Speaking	iBT: Speaking, Listening, Reading, Writing
Test Center	Official KSI Test Centers	

Special Features of SKA

- Comprehensive Assessment in Listening, Reading, Writing, and Speaking
 - Features practical questions used in everyday life and work.
 - Incorporates the latest technologies including stepwise adaptive testing and automatic scoring.
 - You can take the official test at KSIs around the world as well as at designated test centers in Korea and abroad.
 - Aligned with the “Standard Korean Language Education Curriculum” of the National Institute of Korean Language.
 - Used for selecting and admitting highly qualified foreign professionals.
- Examples (as of December 2024): issuance of student visas through the Embassy of the Republic of Korea in Uzbekistan; admission to majors at Yonsei University Global Leaders College; scholarships from Korea National University of Arts AMA+; and selection of scholarship recipients by the POSCO TJ Park Foundation.

FAQ

Q. What is the difference between Nuri Sejonghagdang and Online KSI?

- A. Nuri Sejonghagdang is a portal website for Korean language students and teachers to gain access to learning materials while Online KSI is a learning platform where students can watch online Korean language classes. You can use both websites with one account.

Q. Where can I watch online KSI lectures?

- A. You can watch KSI online lectures at Online KSI (www.iksi.or.kr). Online KSI is an online learning platform where anyone can learn Korean language and culture without time and space constraints. You can discover your Korean language proficiency with an online diagnostic assessment and select and enroll in Korean courses that match your level.

Q. What services does Nuri Sejonghagdang offer for Korean teachers?

- A. Nuri Sejonghagdang provides various educational materials that can help Korean teachers plan and prepare for their classes. After accessing Nuri KSI, teachers can download teaching manuals in PDF format from the [Korean Teachers] menu under [Textbooks and Guidelines], you can download supplementary teaching resources, lesson plans, and other files from [Educational Materials] for use in your classes.

Q. Where can I find the King Sejong Institute textbooks and manuals?

- A. Textbooks and manuals are available on the Nuri Sejong Institute Portal (nuri.iksi.or.kr) in e-book or PDF format.

Category	Korean Language Levels			Korean Culture	
	KSI Korean introduction	KSI Practical Korean	Sejong Korean	Sejong Korean Culture	Sejong Korean Culture (Revised edition)
E-Book	O	O	O	O	O
PDF	O	X	X	X	O

Q. What should I know about using the textbooks and materials from Nuri Sejonghagdang in terms of copyright?

- A. All textbooks, learning materials, and supplementary class resources provided on Nuri KSI are classified as public domain works. They must be used within the permitted scope according to the relevant Korea Open Government License (KOGL) type. In particular, textbooks under Type 4 prohibit commercial use and derivative works, and the source must always be indicated when using the material. For more detailed information on copyright, please contact the Nuri KSI administrator (nuri@iksi.or.kr).

Q. Who can take the Sejong Korean Language Assessment (SKA), when, and where?

- A. The SKA is conducted for prospective and current learners at the King Sejong Institutes and can be taken at KSIs worldwide. Information on assessment dates and locations for each session can be found on the Sejong Korean Language Assessment website (<https://ska.ksif.or.kr>).



11F, 13F Arirang Tower, 2351, Nambusunhwan-ro, Seocho-gu, Seoul
+82-2-3276-0700
www.ksif.or.kr